

An aerial night photograph of a city, likely San Francisco, showing a dense grid of lights reflecting on the water. The text is overlaid on the image.

# Turn Off The Lights!

By: HB-Woodlawn Earth  
Force



Light Pollution



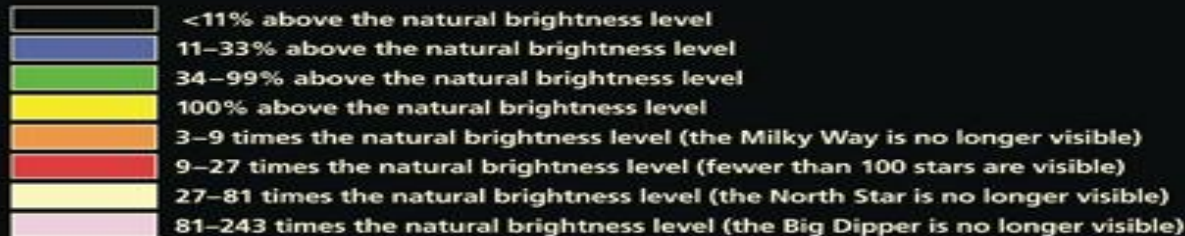
# The Problem

Late 1950s

Mid 1970s

1997

2025



# IMPACTS



Birds are dying because they are flying into the buildings.

Earth at Night  
More information available at:  
<http://antwrp.gsfc.nasa.gov/apod/ap001127.html>



Sea turtles are attracted to artificial light and baby sea turtle are moving away from the sea.



Greenhouse gases are getting into the air which transfers to the rain clouds and comes down as acid rain.

6.64 x 9.54 inch  
image available  
"The Uni





# NOCTURNAL WILDLIFE



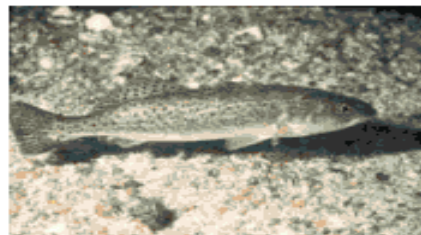
owls



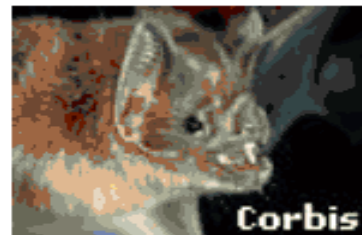
gray tree  
frog



yellow  
crowned night  
heron



spotted sea trout



bats



# Nitrate ( $\text{NO}_3$ ) Pollution



more information available at:  
<http://antwrp.gsfc.nasa.gov/apod/ap001127.html>

image credit:  
"The Uni"

## Light Pollution = Air Pollution

# Trees

LAN “extends the day” as far as trees are concerned

- promotes continued growth
- changes flowering patterns
- delays dormancy in the fall, prompts early change out of dormancy in spring
- larger leaves with stomatal pores that remain open more, leaving trees more susceptible to air pollution

Youngest trees most affected especially some maples, birch, dogwood, beech

[www.darksky.org](http://www.darksky.org)





Dr. Marianne Moore -- increased algae growth  
and poorer water quality in the presence of light  
pollution



# Why This Day?

Our turn out the lights proposal coincides with:

- International Dark Sky Week (April 20 - 26)
- Arlington Earth Day (April 26)
- Peak migration of birds over our area (mid March-mid May)
- National Earth Day (April 22)

# WHAT WE ARE DOING ABOUT IT

*•Our Proposal raises awareness of the growing problems associated with light pollution*





- We are encouraging all Arlington residence and businesses to turn off or dim unnecessary

# LIGHTS

for a ½ hour period on April 26th for ½ hour  
beginning at 10 PM and to then go outside to look at  
the beautiful starry night sky over Arlington



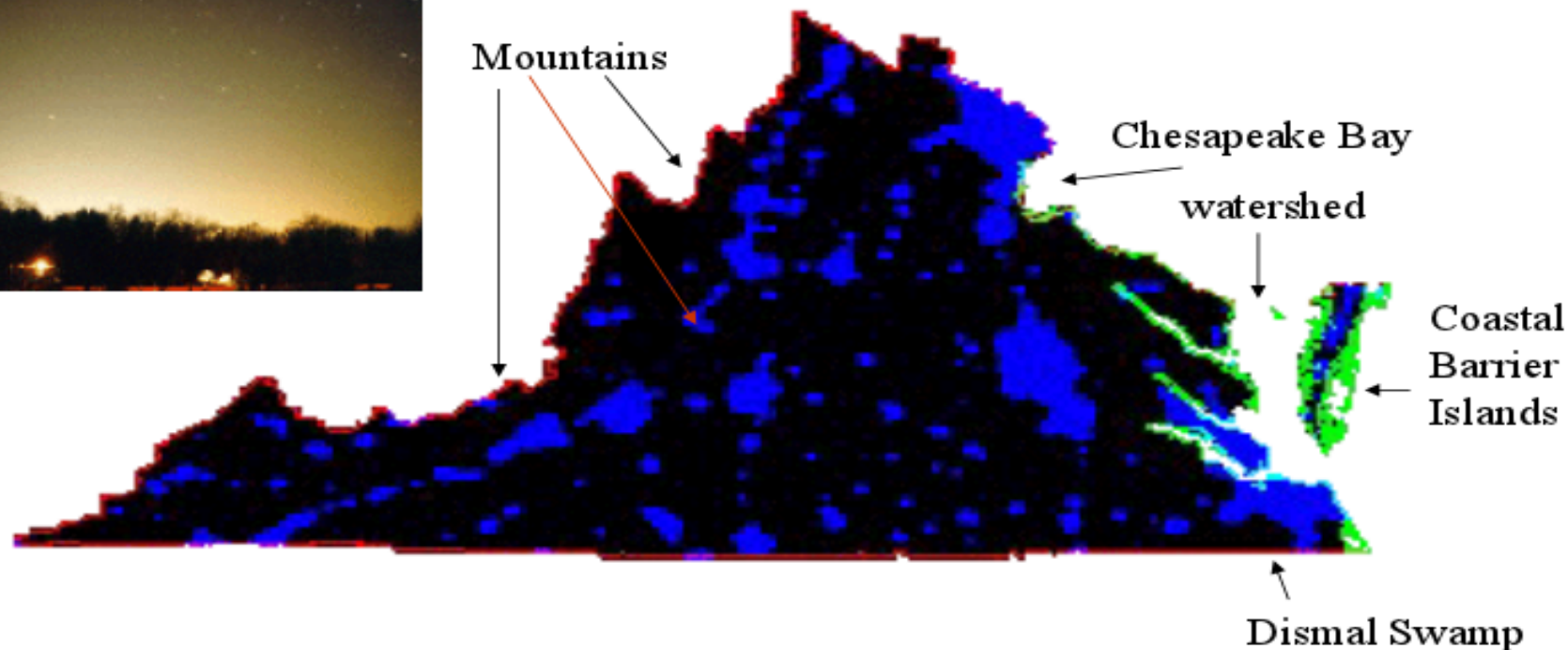
# FIGHT against Breast Cancer

“The modern practice of keeping our bodies exposed to artificial light at night, or LAN, increases cancer risk, especially for cancers such as breast and prostate cancers that require hormones to grow.”

-National Institute of Health



# Virginia's Light Pollution Signature



**Virginia Wildlife Ecosystems Affected by Light Pollution**

**What About Your State, Providence or Country?**

# That's Where You Come In!!!

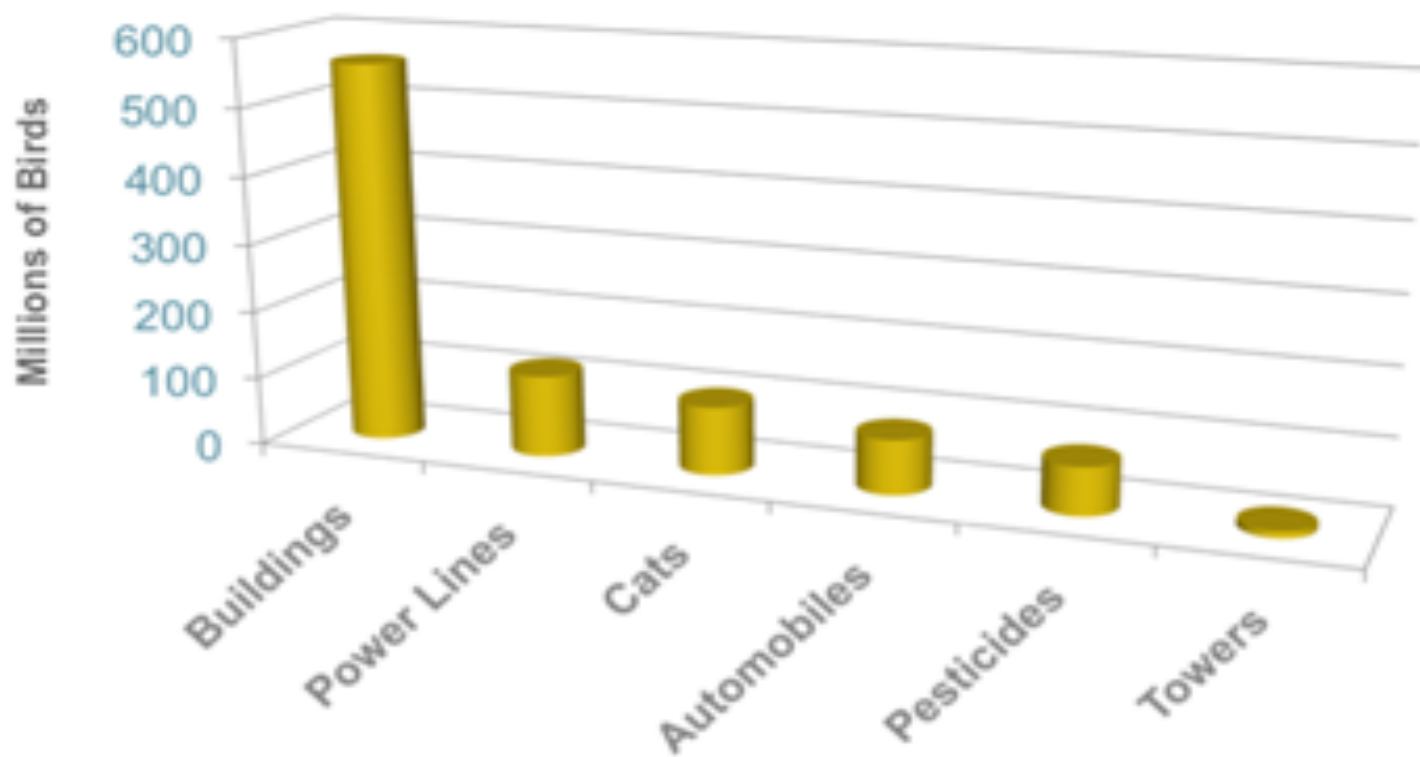
## We Would Like You To:

- Turn off or dim unnecessary lights
- Advertise on website
- Proclaim “Turn Off The Lights”
- Make it an annual event during International Dark Sky Week





# Bird Mortality per Year (USDA)





# We Are Not The First In This Area

LIGHTS OUT DC



# Other Cities with Similar Lights Out Programs

- Washington DC (<http://citywildlife.org/lights%20out.html>)
- Baltimore
- Chicago
- Boston
- New York City
- Minneapolis (the Governor of Minnesota has made the program mandatory for all state owned or leased buildings)
- San Francisco
- Denver
- Detroit
- Indianapolis

# Why Turn Off the Lights?

- Saves Animals
- Saves Energy
- Saves Money
- Reduces Greenhouse gases
- Lowers light pollution
- Sustainability

The background of the entire image is a deep space scene. It features a large, vibrant red nebula with intricate, swirling patterns of gas and dust. The nebula is set against a black background densely populated with stars of various colors, including white, blue, and yellow. The text is overlaid on this cosmic scene.

TURN OFF  
THE LIGHTS!

WITH  
HB-WOODLAWN'S  
EARTH FORCE!